



Versa Works와 GS2-24로 커팅하기

본 제품을 구입해 주셔서 대단히 감사합니다.

- 본 제품의 성능을 충분히 이해하고 정확하고 안전한 사용을 위하여 본 사용설명서를 반드시 숙지하신 후 안전한 장소에 보관하여 주십시오.
- 이 설명서의 전체 또는 일부를 무단으로 복사하거나 양도하는 것을 금지합니다.
- 본 제품의 사양과 본 사용설명서의 내용은 예고 없이 변경될 수 있습니다.
- 사용설명서와 제품은 최대한 준비하여 테스트를 거쳤습니다. 잘못된 인쇄나 오류를 발견하면 저희에게 알려 주십시오.
- Roland DG Corporation은 본 제품의 일부에서 수행되지 않는 기능에 관계없이 본 제품의 사용으로 인해 발생할 수 있는 직간접적인 손실 또는 손해에 대해 책임을 지지 않습니다.
- Roland DG Corporation은 이 제품을 사용하여 만든 모든 제품과 관련하여 발생할 수 있는 직간접적인 손실이나 손해에 대해 책임을 지지 않습니다.



1

629

□

5

□

629

5

629

9

5

□

629

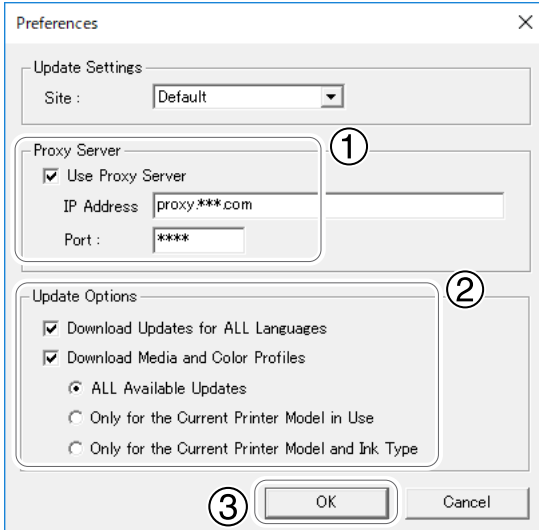


2

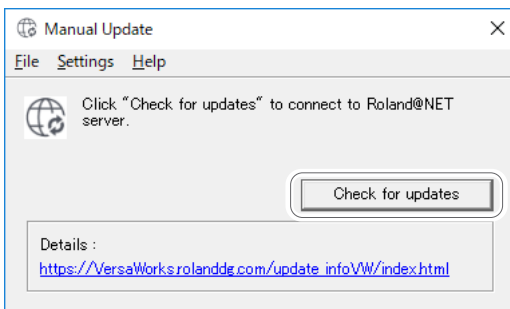
□

3 Make the settings for "Preferences."

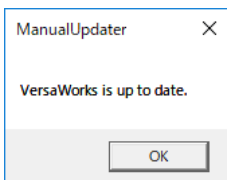
- ① To use a proxy server, select the check box and type in the IP address and port number.
- ② Select the two check boxes, and then select "All Available updates."
- ③ Click [OK].



4 Click [Check for updates].



5 If the following window is displayed, click [OK].



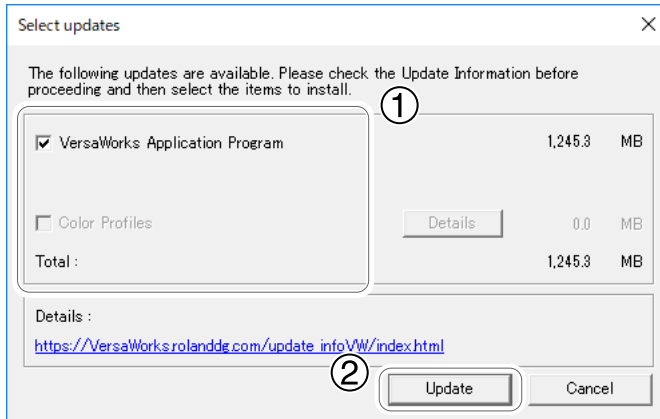
You're using the latest version of VersaWorks.

If the following window is displayed, update the software.

① **Select all of the check boxes that are available for selection.**

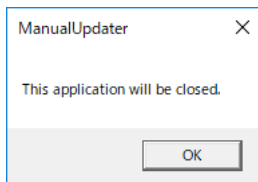
② **Click [Update].**

The update data is downloaded.

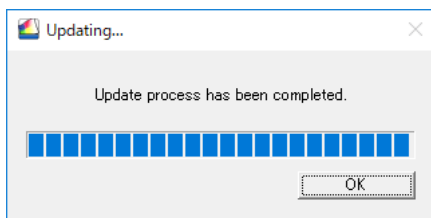


⑥ **Click [OK].**

When the [User Account Control] window appears, click [Yes] (or [Allow]).



⑦ **Click [OK].**




This completes the update of VersaWorks to the latest version.

GS2-24 연결하기

USB 연결

This section explains how to use a USB cable to connect the GS2-24.

절차

- 1 Install the Windows-based driver for the GS2-24, and then connect the GS2-24 and the computer using a USB cable.**
For information on how to perform installation, see the GS2-24 Installation and initial settings.
☞ Installation and initial settings
- 2 If the GS2-24 is off, turn it on.**
- 3 Start VersaWorks.**
Windows 11
.....
 - ① From the [Start] menu, click [All Apps]. On the [All Apps] screen, click [VersaWorks] - [VersaWorks].**Windows 10**
.....
 - ① From the [Start] menu, click [VersaWorks] - [VersaWorks].**Windows 8.1**
.....
 - ① Click  on the [Start] screen.
 - ② On the [Apps] screen, click [VersaWorks] - [VersaWorks].
- 4 Click [Printer] - [Printer Settings].**
The [Printer Settings] window appears.

5 Set the device to connect.

① Select [Printer Driver], and then select the [Printer Name].

② Click [Verify].

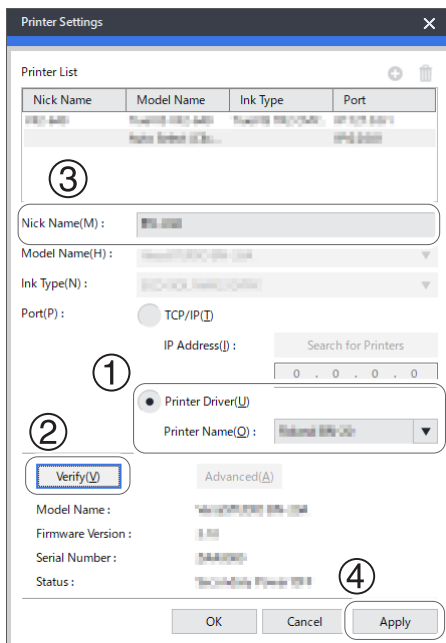
If the connection is established correctly, information pertaining to the GS2-24 such as "Model Name" and "Status" is displayed.

③ Set the [Nick Name].

If you do not set a nickname, the model name is displayed.

④ Click [Apply].

The information of the connected printer appears in the [Printer List].



⑤ When the message [Do you want to install the printer driver?] is displayed, click [Yes].

This message does not indicate the printer driver to use in communication. It indicates the virtual printer driver to use when printing directly from the application.

⑥ When the [User Account Control] window appears, click [Yes] (or [Allow]).

⑦ When the [Add Printer Wizard] window appears, click [Next].

The information of the connected printer appears in the [Printer List].

⑧ Click [OK].

This completes the preparations for cutting using VersaWorks.

이더넷 연결(TCP/IP 연결)

This section explains how to use an Ethernet cable to connect the printer.

절차

- 1 Perform all the preparations required for establishing an Ethernet connection, including installing the Windows-based driver. Then, connect the GS2-24 and the computer using Ethernet cables.**

For information on how to configure the settings and how to perform installation, see the GS2-24 Installation and initial settings.

☞ Installation and initial settings

- 2 If the GS2-24 is off, turn it on.**
- 3 Connect the GS2-24 and the computer (RIP server) to the network.**
- 4 Start VersaWorks.**

Windows 11

.....

- ① From the [Start] menu, click [All Apps]. On the [All Apps] screen, click [VersaWorks] - [VersaWorks].**


Windows 10

.....

- ① From the [Start] menu, click [VersaWorks] - [VersaWorks].**

Windows 8.1

.....

- ① Click  on the [Start] screen.**
- ② On the [Apps] screen, click [VersaWorks] - [VersaWorks].**

- 5 Click [Printer] - [Printer Settings].**

The [Printer Settings] window appears.

6 Set the device to connect.

① Select [Printer Driver], and then select the [Printer Name].

② Click [Verify].

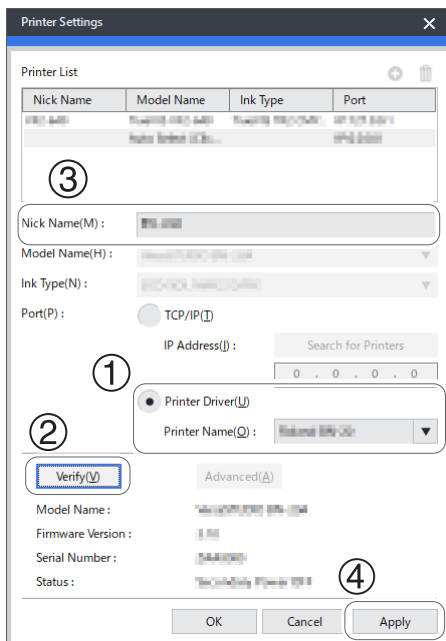
If the connection is established correctly, information pertaining to the GS2-24 such as "Model Name" and "Status" is displayed.

③ Set the [Nick Name].

If you do not set a nickname, the model name is displayed.

④ Click [Apply].

The information of the connected printer appears in the [Printer List].



⑤ When the message [Do you want to install the printer driver?] is displayed, click [Yes].

This message does not indicate the printer driver to use in communication. It indicates the virtual printer driver to use when printing directly from the application.

⑥ When the [User Account Control] window appears, click [Yes] (or [Allow]).

⑦ When the [Add Printer Wizard] window appears, click [Next].

The information of the connected printer appears in the [Printer List].

⑧ Click [OK].

This completes the preparations for cutting using VersaWorks.

커팅 데이터 생성

The term "cutting data" is used to refer to data that includes cutting lines. Use illustration software (such as Adobe Illustrator) to create the cutting data.

This section explains how to create cutting data using Adobe Illustrator and CorelDRAW, which are typical pieces of application software. However, this section assumes that you are already familiar with the basic operations of these pieces of application software.

Adobe Illustrator CC 2021

1. 별색 등록

Register in the swatch library the special color to use for cutting lines.

- 1 On the computer on which VersaWorks has been installed, open the folder [C:\Program Files\VersaWorks\Swatch\Illustrator].**

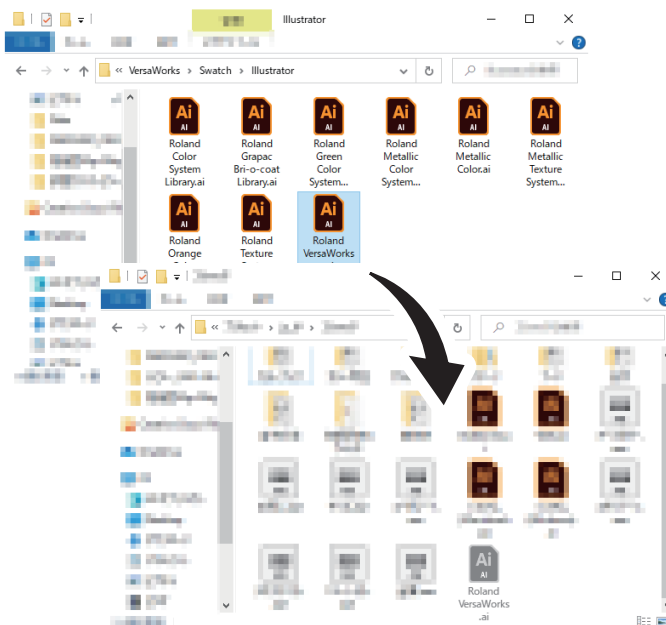
This step requires administrator rights on the computer.

If you do not have these rights, ask the administrator to perform this work.

- 2 Copy the [Roland VersaWorks.ai] file to the [Swatches] folder in the folder where Adobe Illustrator is installed.**

The folders under the Illustrator installation folder are composed as shown below.

Presets/(language folder, example: en-US)/Swatches



2. 커팅 데이터 생성

Create cutting data, which includes the cutting lines.

- 1 Start Adobe Illustrator, and then create the illustration data.
- 2 Click the [Window] menu - [Swatch Libraries] - [Roland VersaWorks].
The [Roland VersaWorks] swatch library is displayed.
- 3 Select only the path that you want to make into a cutting line, and then select [line] in the tool palette.



- 4 Select the swatch named [CutContour] in the swatch library.
The color of the specified path changes to [CutContour].
- 5 Save the data in EPS or PDF format.

CoreIDRAW 2021

1. 별색 등록

Spot colors used for cutting lines are included in CoreIDRAW 2021, so there is no need to register the spot color.

2. 커팅 데이터 생성

Create cutting data, which includes the cutting lines.

- 1 Start CoreIDRAW, and then create the illustration data.
- 2 On the [Window] menu, click [Dockers] - [Palettes].
- 3 In the Palettes window, click [Palette Libraries] - [Spot] - [Roland] - [Roland VersaWorks] to select it.
The [Roland VersaWorks] palette is displayed on the screen.
- 4 Select only the path that you want to make into a cutting line, and then click [CutContour] in the [Roland VersaWorks] palette.
- 5 Click [File] - [Export] to save the file in EPS or PDF format.

커팅 준비

1. 커팅 조건 설정

For the cutting conditions, you have to set appropriate values for each type of material. When you are cutting a material that you have never used before, use a piece of the material to determine the cutting conditions in advance.

① Operate the GS2-24 to perform a cutting test.

See “Step 3: Perform Test Cutting” under “Preparations for Cutting Output” under “Basic Operation” under “Basic Handling Methods” in the GS2-24 user’s manual.

② View the results of the cutting test, and then change the cutting conditions.

- Cutting force (pressure during cutting)
- Cutting speed (speed during cutting)
- Cutting-in amount (amount of blade extension)

For details on how to change the settings, see “Adjusting the Cut Setting” under “Optimizing Cutting Quality” under “Optimizing Quality and Efficiency” in the GS2-24 user’s manual.

③ Change the conditions, and then perform a cutting test again.

④ Repeat steps ② and ③ until the cutting conditions are optimized.

인쇄 후 커팅

This section explains how to use the GS2-24 to cut material that has been printed with a printer. The procedure explained here uses [Queue A] for the job queue folder as an example. When using a different folder, replace [Queue A] with the other one in this procedure. Flatbed-type UV printers do not support printing followed by cutting.

1. Crop Mark를 포함하여 인쇄

Add the crop marks for aligning the positions, and then perform just printing.

IMPORTANT

- Before printing, ensure that the margins are as follows.
 - Margins from left and right edges of the material to the crop marks: 10 mm (0.4 in.) or more
 - Margin from leading edge of the material to the crop marks: 20 mm (0.79 in.) or more
 - Margin from trailing edge of the material to the crop marks: 50 mm (1.97 in.) or more
- When using the pinch rollers in the range of the leftmost grit pattern, ensure that the distance from the left edge of the left grit pattern to the crop marks is at least 30 mm (1.19 in.). Crop marks cannot be read if the distance is less than 30 mm (1.19 in.).

1 Click on the [Queue A] tab of the printer to use.

The [Queue A Properties] window appears.

2 Click .

3 Select the [Crop Marks (Print&Cut Alignment)] check box.

4 Click .

5 Select [Print Only] from the [Operation Mode] list box.

6 Click [OK].

IMPORTANT

If the source data for the job is an EPS file and a cutting line has been drawn around the border, configure the settings shown below before adding the job to the job list. If you do not configure these settings, a part of the border may not be cut.

1 On the [Queue Properties] window, click .

2 Enter a value of 0.35 mm (13.8 mil) or more for [Margin] under [EPS].

- If you enter a value less than 0.35 mm (13.8 mil), no margin will be added.
- If you configure the zoom in/zoom out settings on the [Queue Properties] or [Job Settings] window, the margin will also be zoomed in on/zoomed out from. When you add a job to the job list, a margin with the width set with [Margin] is automatically added within the range specified by the border.

7 Click [File] - [Add Job to Queue] - [Queue A].

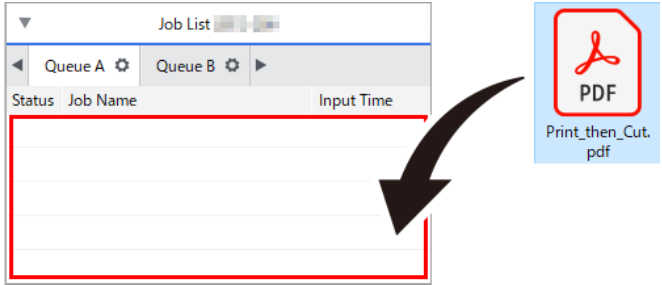
The [Open] window is displayed.

8 Select the cutting data to add to the job list, and then click [Open].

The selected data is displayed in the job list. Select the data that includes the cutting lines (paths specified with CutContour).

MEMO

You can also add the cutting data to the job list directly by dragging this data to the job area.



9 Select the job to print from the job list, and then click .

The job is printed with crop marks.

2. 인쇄물 커팅

Load the printed material into the GS2-24, and then perform cutting.

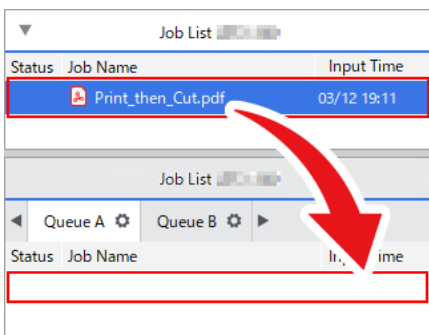
1 Perform laminating or other required processing, and then load the material into the GS2-24.

Load the material according to “Setting Up Flat Material” under “Setting Up Material” under “Basic Operation” under “Basic Handling Methods” in the GS2-24 user’s manual.

After loading the material, press [▲] and [▼] on the machine to move the material and position the crop marks above the blade protector.

2 Display the [Job Settings] window.

① Select a job that has been printed, and then drag it to the job list of the GS2-24.



② Select the job that you have dragged, and then double-click it.

3 As necessary, perform the operations shown below.

Cut the border of the job regardless of whether a cutting line is present.

- Select the [Cut Image Boundaries] check box.

Set printer cutting conditions such as the blade force.

- Select the [Enable Advanced Settings] check box to enable the settings.

4 Click [OK].

5 Select the job to cut from the job list.

6 Click .

The machine reads the crop marks to align the positions, and then cuts the material.