

To Users of



VersaWorks

Points for Outputting Data to a GR2-640/540

본 제품을 구매해 주셔서 감사합니다.

- 본 제품의 성능을 완전히 이해하고, 안전하고 정확하게 사용하기 위해 이 매뉴얼을 완전히 숙지하시고 안전한 곳에 보관해 주십시오.
- 이 매뉴얼의 전체나 일부를 허가 없이 복사하거나 양도하는 행위는 금지되어 있습니다.
- 이 매뉴얼의 내용과 제품의 설명은 별도의 통보 없이 변경될 수 있습니다.
- 매뉴얼과 제품은 최대한의 준비 작업과 테스트 작업을 거쳤습니다. 오타나 에러가 있다면

Roland DG Corp.에 알려 주십시오.

- Roland DG Corp.은 본 제품의 일부에 기능 결함이 발생하는 것과 상관없이, 본 제품을 사용함으로써직간접적으로 발생하는 모든 손해에 대해 책임을 지지 않습니다.

- Roland DG Corp.은 본 제품을 사용하여 만든 모든 결과물에 직간접적으로 발생하는 손실이나 손해에 대한 책임을 지지 않습니다.

본 소프트웨어 및 본 설명서의 저작권 및 재산은 Roland DG Corporation에 귀속됩니다. 본 소프트웨어 또는 출판물의 어떤 부분도 출판사의 사전 서면 허가 없이 전자, 기계, 복사, 녹음 또는 기타 어떠한 수단으로도 복제, 검색 시스템에 저장 또는 전송할 수 없습니다.

소프트웨어 응용 프로그램 또는 사용자 설명서에 표시된 PANTONE 색상은 PANTONE 식별 표준과 일치하지 않을 수 있습니다. 정확한 색상은 현재 PANTONE Color Publications를 참조하십시오. PANTONE 및 기타 Pantone 상표는 "Pantone LLC. ©Pantone LLC, 2012"의 자산입니다.

Pantone은 VersaWorks와 함께 사용하기 위해 배포할 수 있도록 Roland DG Corp.에 라이선스가 부여된 색상 데이터 및/또는 소프트웨어의 저작권 소유자입니다. PANTONE 색상 데이터 또는 소프트웨어는 VersaWorks 실행의 일부가 아닌 다른 디스크나 메모리에 복사할 수 없습니다.

기타 회사 이름 및 제품 이름은 해당 소유자의 상표 또는 등록 상표입니다.

목차

목차	1
소개	2
이 설명서에 대하여	2
VersaWorks 도움말에 대하여(전자 형식 설명서)	2
GR2-640/540을 연결하기 전에	3
GR2-640/540 연결하기	6
USB 연결	6
이더넷 연결(TCP/IP 연결)	8
커팅 데이터 생성	10
Adobe Illustrator CC 2021	10
CorelDRAW 2021	11
커팅 준비	12
인쇄 후 커팅	13

소개

이 설명서에 대하여

이 설명서에는 VersaWorks를 사용하여 GR2-640/540으로 커팅을 수행하기 위한 기본 작동 방법이 포함되어 있습니다.

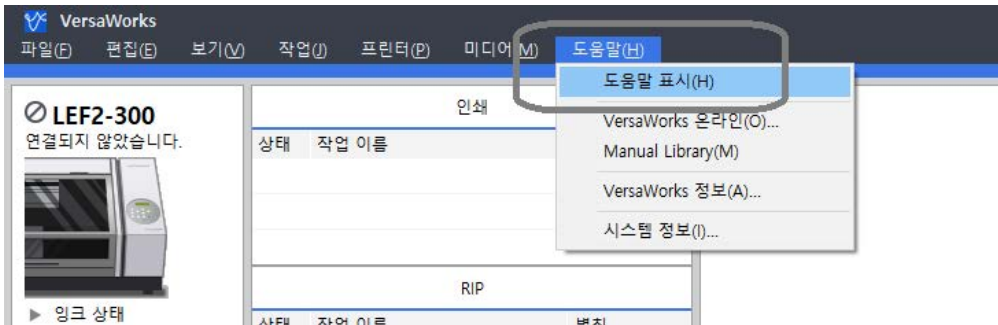
VersaWorks는 이 제품에 포함되어 있지 않습니다. 이 설명서의 설명은 귀하가 Roland DG 프린터를 소유하고 있고 VersaWorks가 이미 설치되어 있다고 가정합니다.

VersaWorks 도움말에 대하여(전자 형식 설명서)

이 설명서에는 VersaWorks의 운용 방법이 기재되어 있습니다. VersaWorks 도움말은 컴퓨터 화면에서 볼 수 있는 사용 설명서입니다. 소프트웨어가 설치되면 도움말을 볼 수 있습니다.

도움말을 표시하려면 다음 작업을 수행하십시오.

VersaWorks를 시작하고 [도움말] 메뉴의 [도움말 표시]를 클릭합니다.

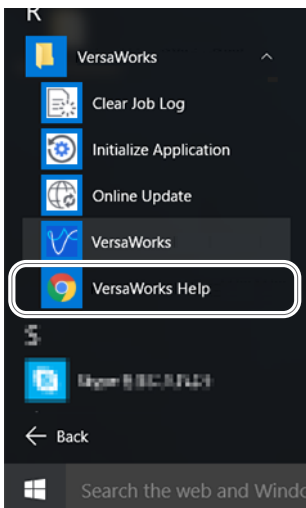


Windows 10

[시작] 메뉴에서 [VersaWorks] - [VersaWorks 도움말]을 클릭합니다.

Windows 8.1

[시작] 화면에서 [다운로드]를 클릭하고 [앱] 화면에서 [VersaWorks] - [VersaWorks 도움말]을 클릭합니다.





-
-
-

- 6291
-



1 6291

51

6291

91

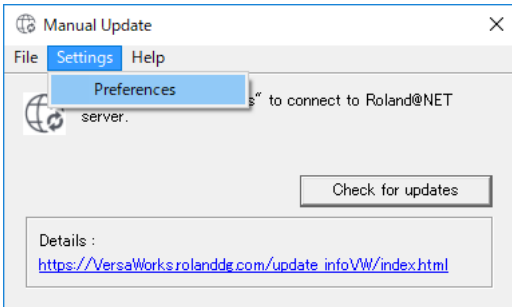
51

□



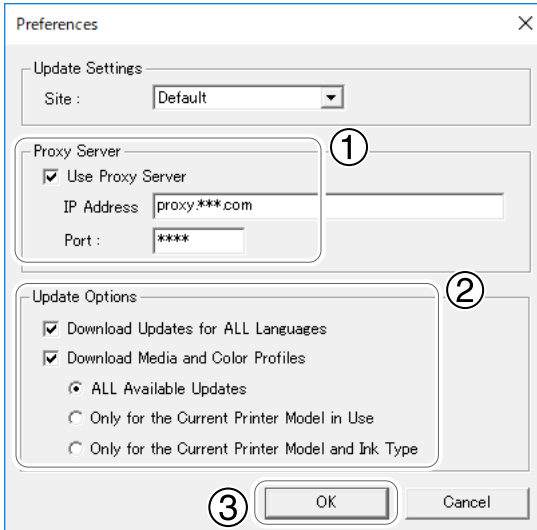
6291

2 □

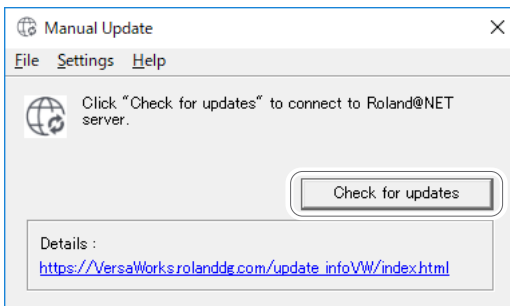


3 "기본 설정"에 대한 설정을 지정합니다.

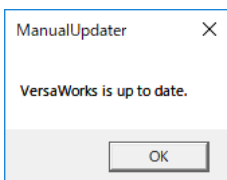
- ① 프록시 서버를 사용하려면 확인란을 선택하고 IP 주소와 포트 번호를 입력합니다.
- ② 두 개의 확인란을 선택한 후 "사용 가능한 모든 업데이트"를 선택합니다.
- ③ [확인]을 클릭합니다.



4 [업데이트 확인]을 클릭합니다.



5 다음 창이 표시되면 [확인]을 클릭합니다.

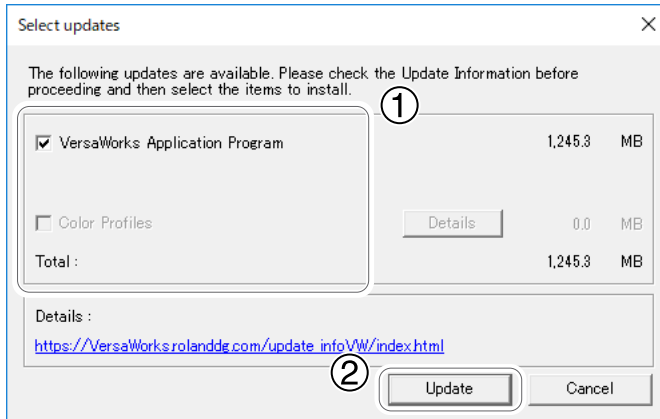


최신 버전의 VersaWorks를 사용하고 있습니다.

다음 창이 표시되면 소프트웨어를 업데이트하십시오.

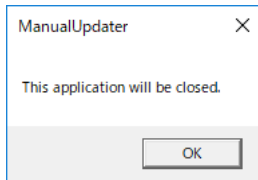
- ① 선택 가능한 체크박스를 모두 선택합니다.
- ② [업데이트]를 클릭합니다.

업데이트 데이터가 다운로드됩니다.

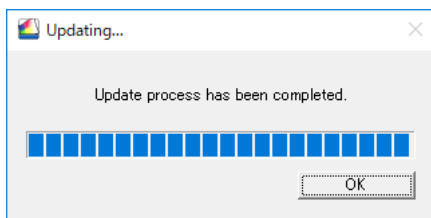


- 6 [확인]을 클릭합니다.

[사용자 계정 컨트롤] 창이 나타나면 [예](또는 [허용])를 클릭합니다.



- 7 [확인]을 클릭합니다.



이것으로 VersaWorks의 최신 버전 업데이트가 완료됩니다.

GR2-640/540 연결하기

USB 연결

이 섹션에서는 USB 케이블을 사용하여 GR2-640/540을 연결하는 방법을 설명합니다.

절차

- 1 GR2-640/540용 Windows 기반 드라이버를 설치한 후 USB 케이블을 사용하여 GR2-640/540과 컴퓨터를 연결합니다.

설치 방법에 대한 정보는 GR2-640/540 설치 안내서를 참조하십시오.

- 2 Check that the GR2-640/540 is turned on.

- 3 Start VersaWorks.


Windows 10

.....

- ① From the [Start] menu, click [VersaWorks] - [VersaWorks].

Windows 8.1

.....

- ① Click  on the [Start] screen.
- ② On the [Apps] screen, click [VersaWorks] - [VersaWorks].

The [Printer Settings] window appears. It appears only when starting up for the first time.

4 Set the device to connect.

① **Select [Printer Driver], and then select the [Printer Name].**

② **Click [Verify].**

If the connection is established correctly, information pertaining to the GR2-640/540 such as "Model Name" and "Status" is displayed.

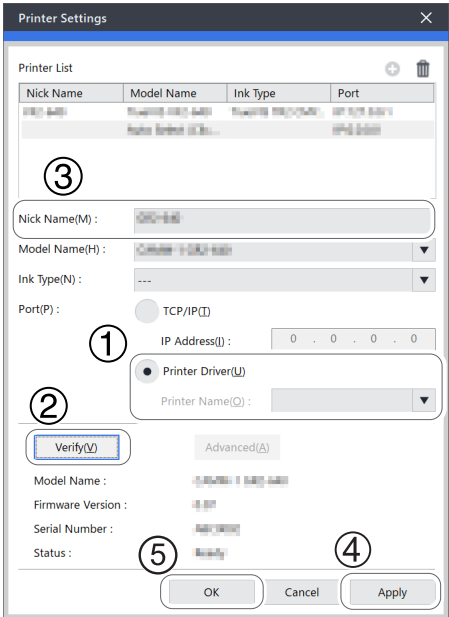
③ **Enter a [Nick Name] for the printer.**

If you do not set a nickname, the model name is displayed.

④ **Click [Apply].**

The connected device information appears in the [Printer List].

⑤ **Click [OK].**



This completes the preparations for cutting using VersaWorks.

Ethernet Connection (TCP/IP Connection)

This section explains how to use an Ethernet cable to connect the printer.

Procedure

- 1 Perform all the preparations required for establishing an Ethernet connection, including installing the Windows-based driver. Then, connect the GR2-640/540 and the computer using Ethernet cables.**

For information on how to configure the settings and how to perform installation, see the GR2-640/540 installation guide.

- 2 Check that the GR2-640/540 is turned on.**
- 3 Connect the GR2-640/540 and the computer (RIP server) to the network.**
- 4 Start VersaWorks.**


Windows 10

.....

- ① From the [Start] menu, click [VersaWorks] - [VersaWorks].**

Windows 8.1

.....

- ① Click  on the [Start] screen.**
- ② On the [Apps] screen, click [VersaWorks] - [VersaWorks].**

The [Printer Settings] window appears. It appears only when starting up for the first time.

5 Set the device to connect.

① Select [Printer Driver], and then select the [Printer Name].

② Click [Verify].

If the connection is established correctly, information pertaining to the GR2-640/540 such as "Model Name" and "Status" is displayed.

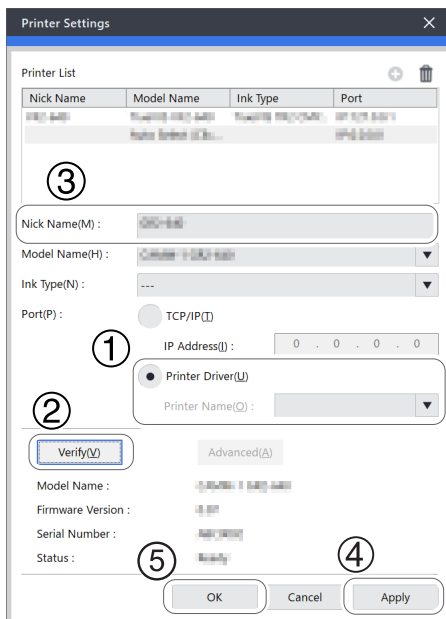
③ Enter a [Nick Name] for the printer.

If you do not set a nickname, the model name is displayed.

④ Click [Apply].

The connected printer information appear in the [Printer List].

⑤ Click [OK].



This completes the preparations for cutting using VersaWorks.

Creating Cutting Data

The term "cutting data" is used to refer to data that includes cutting lines. Use illustration software (such as Adobe Illustrator) to create the cutting data.

This section explains how to create cutting data using Adobe Illustrator and CorelDRAW, which are typical pieces of application software. However, this section assumes that you are already familiar with the basic operations of these pieces of application software.

Adobe Illustrator CC 2021

1. Register the spot color.

Register in the swatch library the special color to use for cutting lines.

- 1 On the computer on which VersaWorks has been installed, open the folder [C:\Program Files\VersaWorks\Swatch\Illustrator].**

This step requires administrator rights on the computer.

If you do not have these rights, ask the administrator to perform this work.

- 2 Copy the [Roland VersaWorks.ai] file to the [Swatches] folder in the folder where Adobe Illustrator is installed.**

The folders under the Illustrator installation folder are composed as shown below.

Presets/(language folder, example: en-US)/Swatches

2. Create the cutting data.

Create cutting data, which includes the cutting lines.

- 1 Start Adobe Illustrator, and then create the illustration data.**
- 2 Click the [Window] menu - [Swatch Libraries] - [Roland VersaWorks].**
The [Roland VersaWorks] swatch library is displayed.
- 3 Select only the path that you want to make into a cutting line, and then select [line] in the tool palette.**



- 4** Select the swatch named [CutContour] in the swatch library.
The color of the specified path changes to [CutContour].
- 5** Save the data in EPS or PDF format.

CoreIDRAW 2021

1. Register the spot color.

Spot colors used for cutting lines are included in CoreIDRAW 2021, so there is no need to register the spot color.

2. Create the cutting data.

Create cutting data, which includes the cutting lines.

- 1** Start CoreIDRAW, and then create the illustration data.
- 2** On the [Window] menu, click [Dockers] - [Palettes].
- 3** In the Palettes window, click [Palette Libraries] - [Spot] - [Roland] - [Roland VersaWorks] to select it.
The [Roland VersaWorks] palette is displayed on the screen.
- 4** Select only the path that you want to make into a cutting line, and then click [CutContour] in the [Roland VersaWorks] palette.
- 5** Click [File] - [Export] to save the file in EPS or PDF format.

Preparations for Cutting

1. Determine the cutting conditions.

For the cutting conditions, you have to set appropriate values for each type of material. When you are cutting a material that you have never used before, use a piece of the material to determine the cutting conditions in advance.

If the media is frequently used and it is likely that the set conditions will often be used in the future, it is advisable to save the conditions on the machine. For details on how to do so, see “Using Presets” under “Cutting Efficiently” under “Optimizing Quality and Efficiency” in the GR2-640/540 user’s manual.

1 Operate the GR2-640/540 to perform a cutting test.

See “Performing a Cutting Test” under “Preparations before Cutting Output” under “Cutting Output” in the GR2-640/540 user’s manual.

2 View the results of the cutting test, and then change the cutting conditions.

- Cutting force (pressure during cutting)
- Cutting speed (speed during cutting)
- Cutting-in amount (amount of blade extension)

For details on how to change the settings, see the linked items in “Adjusting Cutting Conditions” under “Preparations before Cutting Output” under “Cutting Output” in the GR2-640/540 user’s manual.

3 Change the conditions, and then perform a cutting test again.

4 Repeat steps 2 and 3 until the cutting conditions are optimized.

Cutting after Printing

This section explains how to use the GR2-640/540 to cut material that has been printed with a printer.

The procedure explained here uses [Queue A] for the job queue folder as an example. When using a different folder, replace [Queue A] with the other one in this procedure.




Flatbed-type UV printers do not support printing followed by cutting.

1. Print with crop marks.

Add the crop marks for aligning the positions, and then perform just printing.


IMPORTANT: Ensure there is a margin of 15 mm (0.59 in.) or more from the edge of the material.


When you are printing with a printer, set the margin from the edge of the material to 15 mm (0.59 in.) or more. If the margin is smaller than 15 mm (0.59 in.), the GR2-640/540 may not be able to read the crop marks normally.

- 1 Click  on the [Queue A] tab of the printer to use.
The [Queue A Properties] window appears.
- 2 Click .
- 3 Select the [Crop Marks (Print&Cut Alignment)] check box.
- 4 Click .
- 5 Select [Print Only] from the [Operation Mode] list box.
- 6 Click [OK].

IMPORTANT

If the source data for the job is an EPS file and a cutting line has been drawn around the border, configure the settings shown below before adding the job to the job list. If you do not configure these settings, a part of the border may not be cut.

- 1 On the [Queue Properties] window, click .
- 2 Enter a value of 0.35 mm (13.8 mil) or more for [Margin] under [EPS].
 - If you enter a value less than 0.35 mm (13.8 mil), no margin will be added.
 - If you configure the zoom in/zoom out settings on the [Queue Properties] or [Job Settings] window, the margin will also be zoomed in on/zoomed out from. When you add a job to the job list, a margin with the width set with [Margin] is automatically added within the range specified by the border.
- 7 Click [File] - [Add Job to Queue] - [Queue A].
The [Open] window is displayed.
- 8 Select the cutting data to add to the job list, and then click [Open].
The selected data is displayed in the job list. Select the data that includes the cutting lines (paths specified with CutContour).

- 9 Select the job to print from the job list, and then click .
The job is printed with crop marks.

2. Cut the printed material.

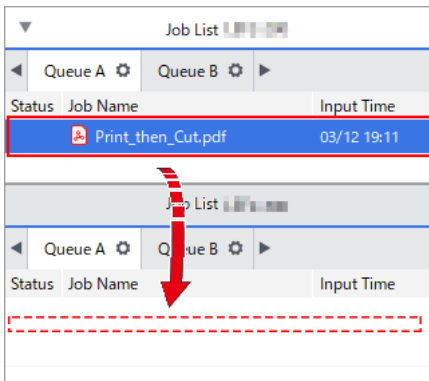
Load the printed material into the GR2-640/540, and then perform cutting.


- 1 Perform laminating or other required processing, and then load the material into the GR2-640/540.

See “Setting Up Material” under “Basic Settings and Operations” under “Basic Handling Methods” in the GR2-640/540 user’s manual.

- 2 Display the [Job Settings] window.

- 1 Select a job that has been printed, and then drag it to the job list of the GR2-640/540.



- 2 Select the job that you have dragged, and then double-click it.
- 3 As necessary, perform the operations shown below.
Cut the border of the job regardless of whether a cutting line is present.
 - Select the [Cut Image Boundaries] check box.Set printer cutting conditions such as the blade force.
 - Select the [Enable Advanced Settings] check box to enable the settings.
- 4 Click [OK].
- 5 Select the job to cut from the job list.
- 6 Click .
The machine reads the crop marks to align the positions, and then cuts the material.